

first floor
area calc:
ffl: 1660 sq ft
sfl: 1073 sq ft
total: 2733 sq ft
plates:
1st = 8'-1"
(opt. 9'-1")
2nd = 9'-1"

fnd: basement / slab
6'-8" doors first floor / 16 risers
wdfs ffl: 3050 sh sfl: 3050 sh
14" web floor trusses

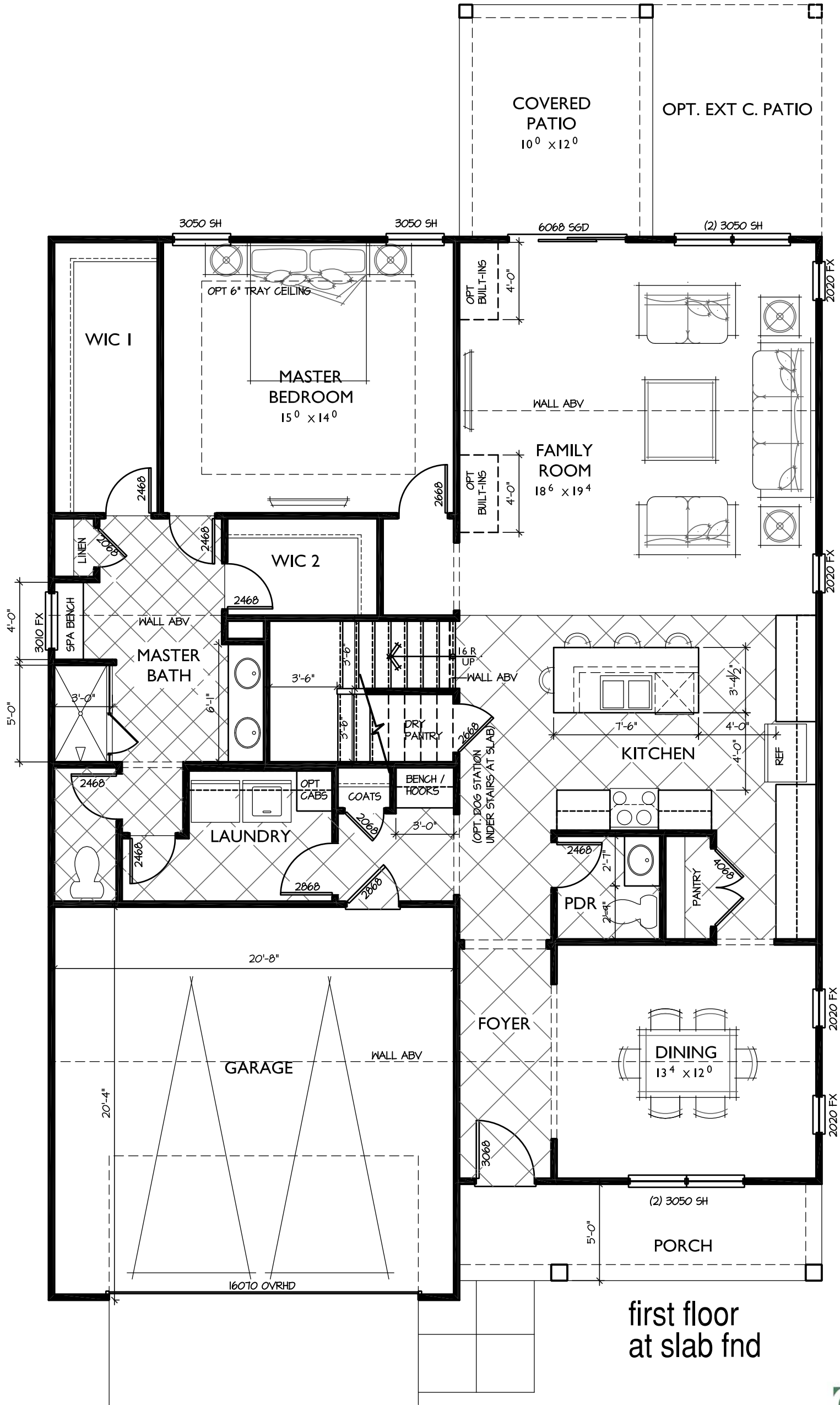


Plan 3
Boston Rd
scale: 3/16"=1'-0"
08.22.18 Lexington, KY

GMD-GA job#
GMD-GA18063



The drawings presented are illustrative of character and design intent only, and are subject to change based upon final design considerations (i.e. applicable codes, structural, and MEP design requirements, unit plan / floor plan changes, etc.)
© 2018 gmddesigngroup of ga, inc.



first floor
at slab fnd

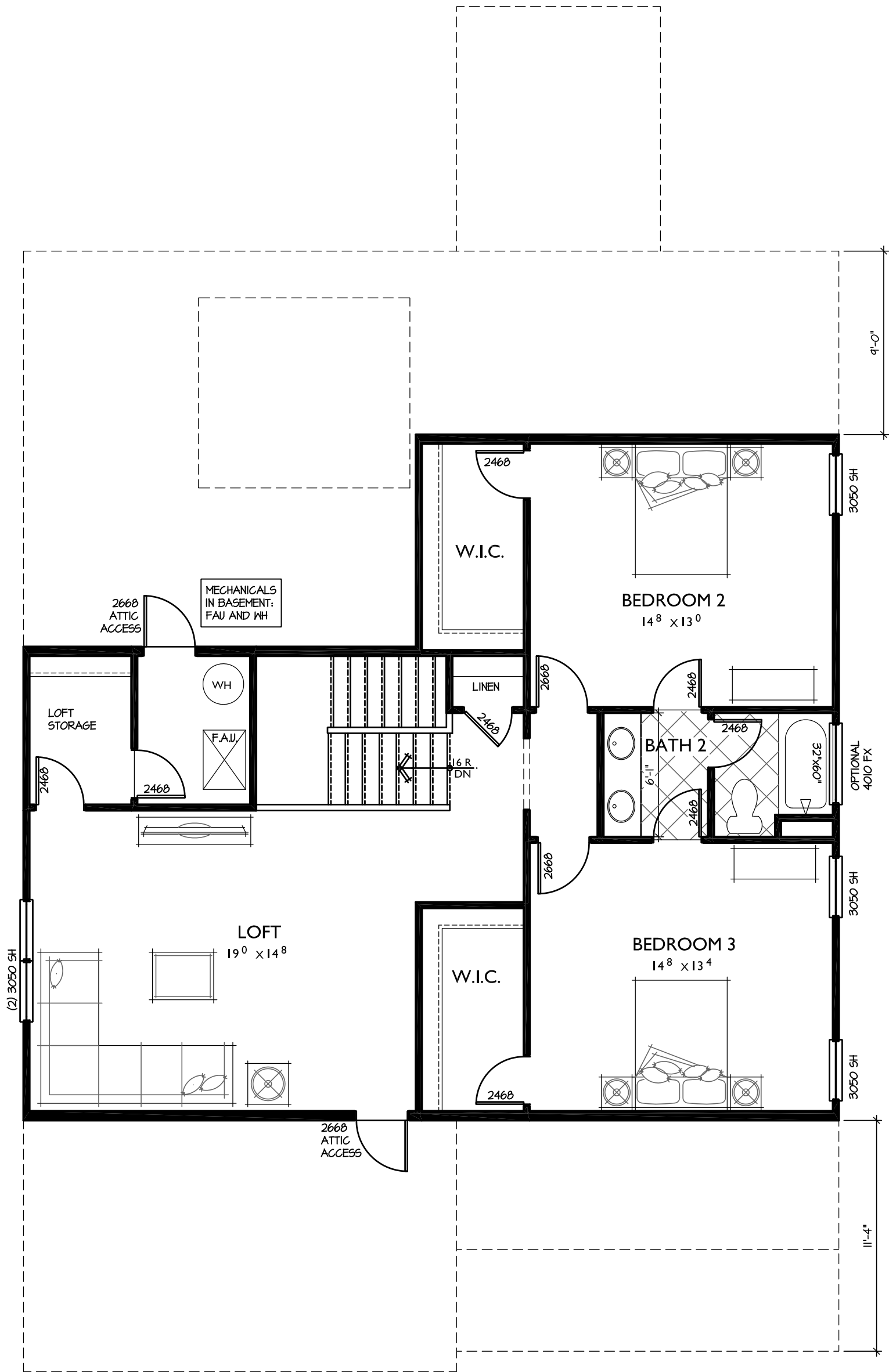


Plan 3
Boston Rd
scale: 3/16"=1'-0"
08.22.18 Lexington, KY

GMD-GA job#
GMD-GA18063



The drawings presented are illustrative of character and design intent only, and are subject to change based upon final design considerations (i.e. applicable codes, structural, and MEP design requirements, unit plan / floor plan changes, etc.)
© 2018 gmdesigngroup of ga, inc.



second floor

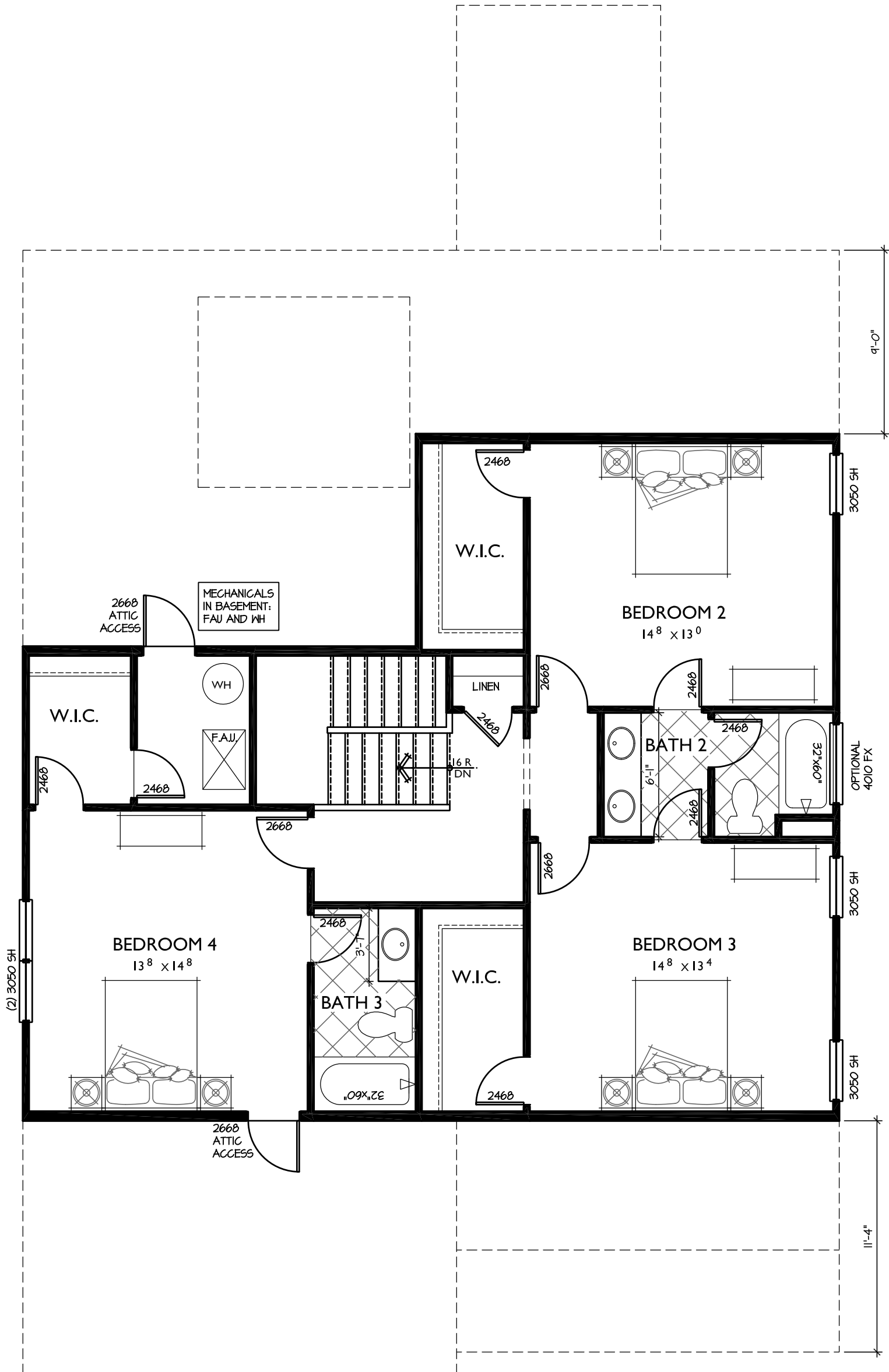


Plan 3
Boston Rd
 scale: 3/16"=1'-0"
 08.22.18 Lexington, KY

GMD-GA job#
 GMD-GA18063



The drawings presented are illustrative of character and design intent only, and are subject to change based upon final design considerations (i.e. applicable codes, structural, and MEP design requirements, unit plan / floor plan changes, etc.) © 2018 gmdesigngroup of ga, inc.



second floor
opt bedroom 4

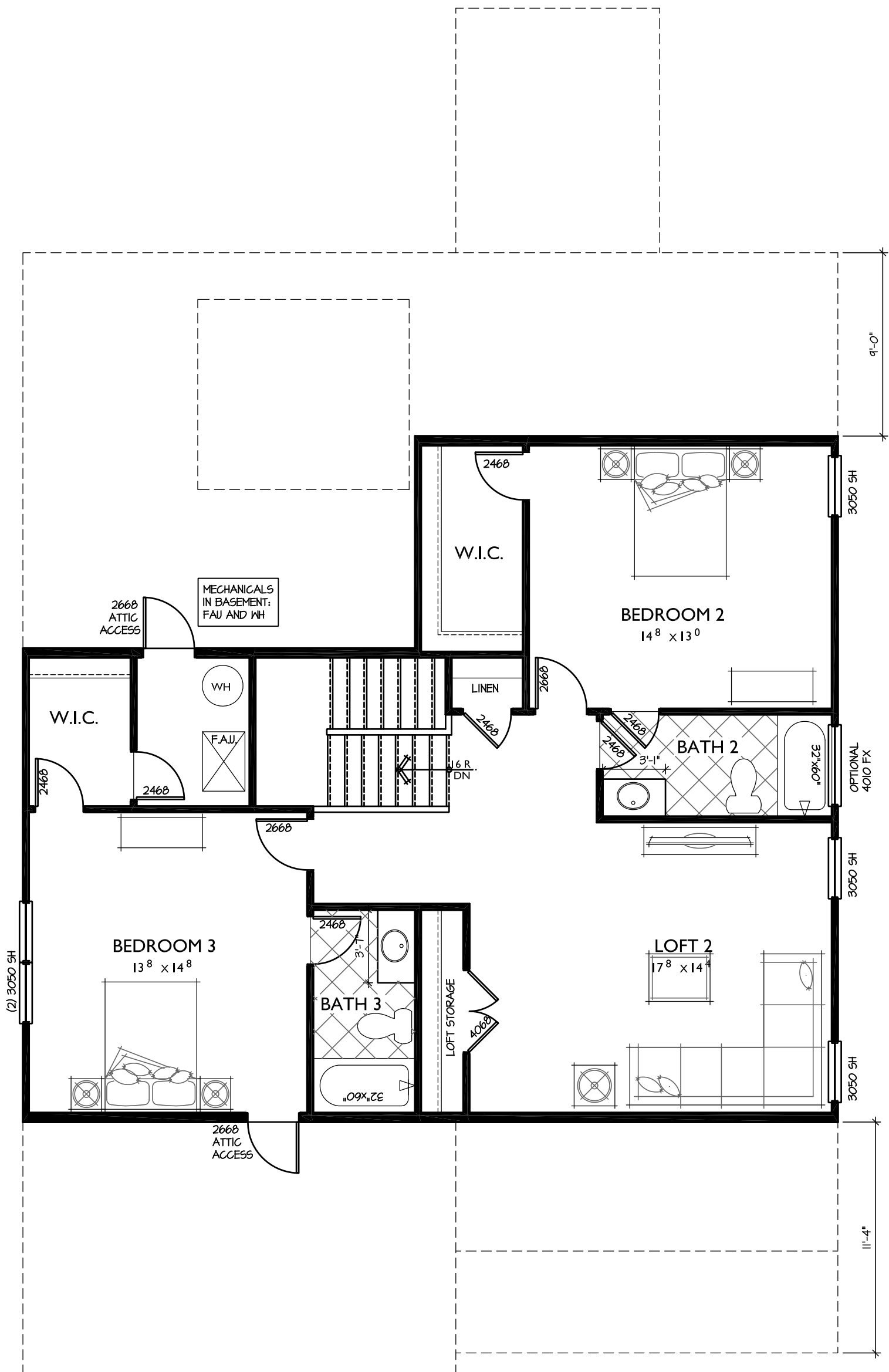


Plan 3
Boston Rd
scale: 3/16"=1'-0"
08.22.18 Lexington, KY

GMD-GA job#
GMD-GA18063



The drawings presented are illustrative of character and design intent only, and are subject to change based upon final design considerations (i.e. applicable codes, structural, and MEP design requirements, unit plan / floor plan changes, etc.)
© 2018 gmdesigngroup of ga, inc.



second floor
opt loft 2

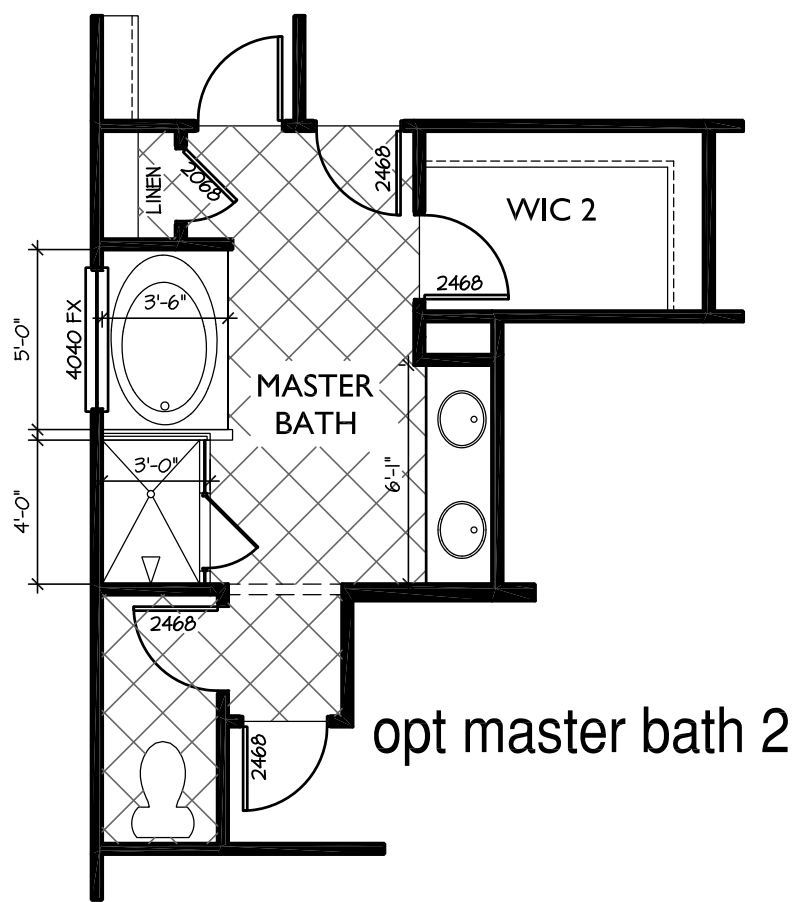
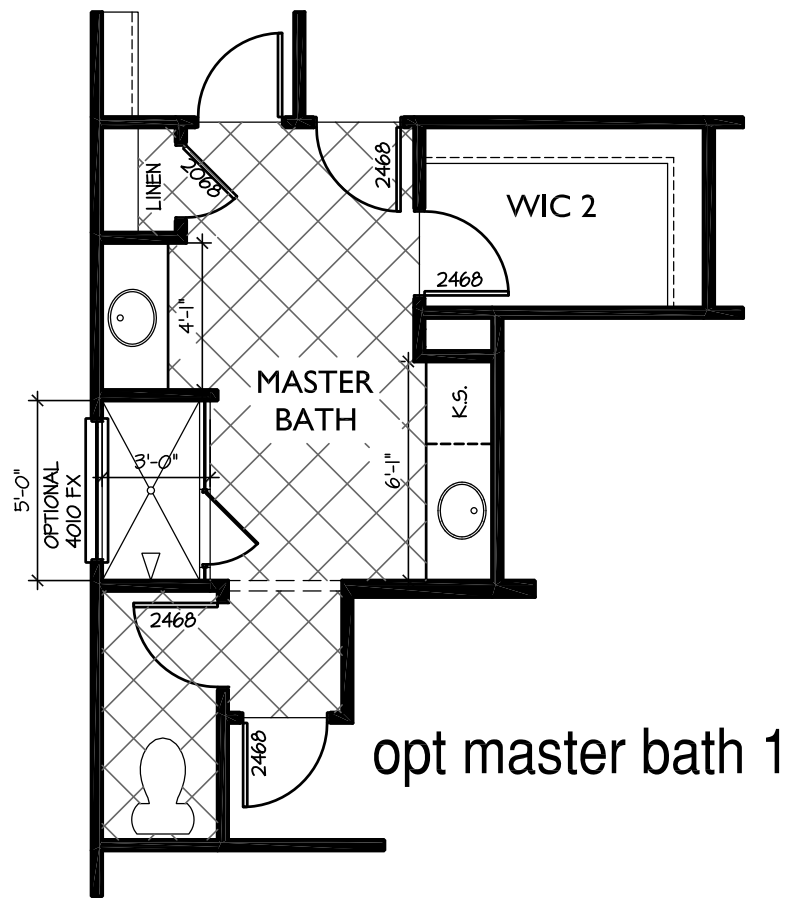


Plan 3
Boston Rd
scale: 3/16"=1'-0"
08.22.18 Lexington, KY

GMD-GA job#
GMD-GA18063



The drawings presented are illustrative of character and design intent only, and are subject to change based upon final design considerations (i.e. applicable codes, structural, and MEP design requirements, unit plan / floor plan changes, etc.)
© 2018 gmdesigngroup of ga, inc.

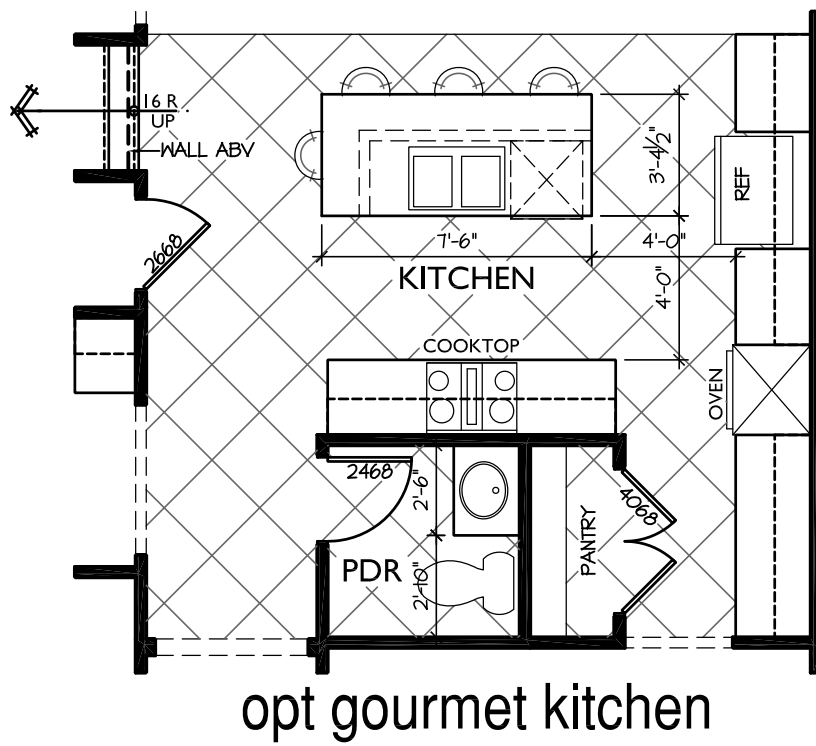
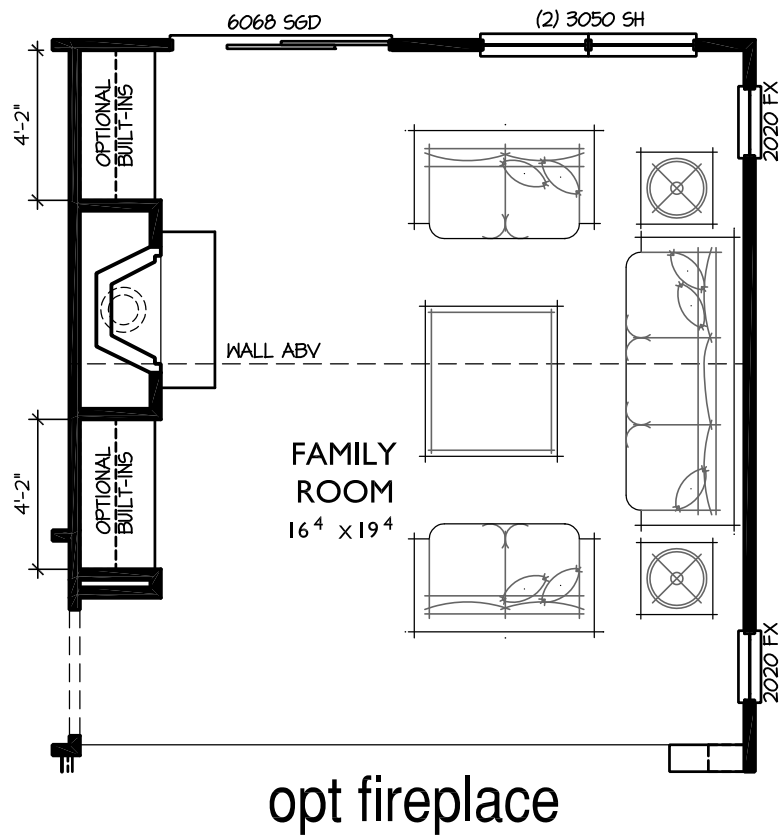


Plan 3
Boston Rd
 scale: 3/16"=1'-0"
 08.22.18 Lexington, KY

GMD-GA job#
 GMD-GA18063



The drawings presented are illustrative of character and design intent only, and are subject to change based upon final design considerations (i.e. applicable codes, structural, and MEP design requirements, unit plan / floor plan changes, etc.)
 © 2018 gmdesigngroup of ga, inc.



Plan 3
Boston Rd
 scale: 3/16"=1'-0"
 08.22.18 Lexington, KY

GMD-GA job#
 GMD-GA18063



The drawings presented are illustrative of character and design intent only, and are subject to change based upon final design considerations (i.e. applicable codes, structural, and MEP design requirements, unit plan / floor plan changes, etc.) © 2018 gmdesigngroup of ga, inc.